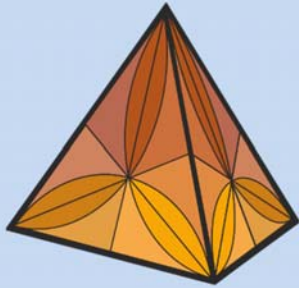


7th Course and Open Seminar on Compositional Data Analysis (CoDaCourse)

July, 2-6
2018

Universitat
de Girona



Organized by:
Dpt. Computer Science,
Applied Mathematics
and Statistics
University of Girona
Campus Montilivi, P4
E-17003 Girona (Spain)
Coord:
41°57'46.5"N 2°49'53"E

Course Seats Limited

Special Fees for
Students and
CoDa-Association

Recommended
background:
One semester course
in statistics and basic
knowledge of
multivariate statistics.

This course is officially
accredited by the

IAMG



Supported by:

Universitat de Girona

Agència
de Gestió
d'Ajuts
Universitaris
i de Recerca



As every first week of July since 2012, a **5-day course** on compositional data analysis will be imparted at the University of Girona (UdG) by members of the Research Group on Compositional Data Analysis.

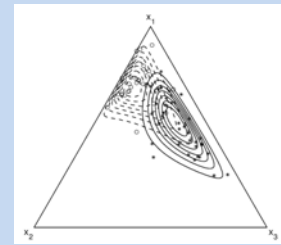
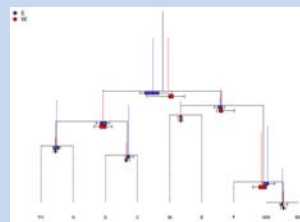
Compositional data are vectors whose components show the relative importance of some parts of a whole. Typical examples are data presented in percentages, ppm, ppb, or the like. Aitchison introduced the logratio approach to analyse compositional data back in the eighties. Since then, progress has been done in understanding the special geometry of their sample space, the simplex.

This CoDaCourse provides an introduction to theoretical and practical aspects of the statistical analysis of compositional data, as well as an informal discussion forum on more advanced topics. In the **theoretical sessions**, the current state of the art in this field will be presented. In the **practical sessions**, CoDa techniques are applied using the available software CoDaPack and some R packages. An **open discussion session** is also planned. We encourage you to **bring your own data!!!**

The following **topics** will be covered:

- Hypothesis underlying the statistical analysis (sample space, scale).
- The Aitchison geometry on the simplex.
- Coordinate representation; distributions on the simplex.
- Exploratory analysis (centering, variation array, biplot, balances-dendrogram).
- Irregular data: zero values, outliers and missing data.
- Introduction to multivariate analysis: regression, manova, cluster and discriminant.

Course may get cancelled if registered students are less than 5.



The registration
is now OPEN!!

How to apply: visit
www.compositionaldata.com
and fill in the form at the
CoDaCourses menu

Visit our web:

